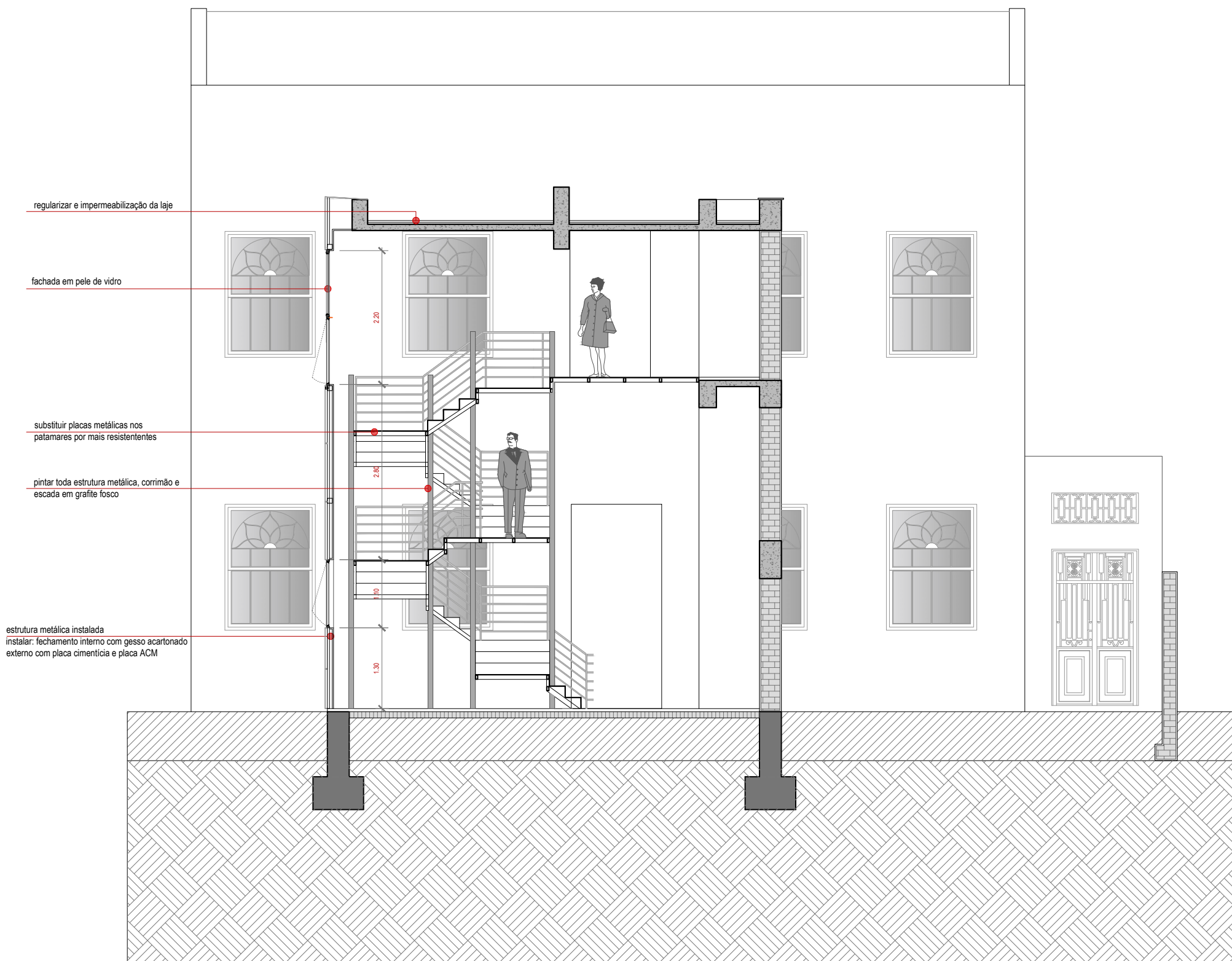
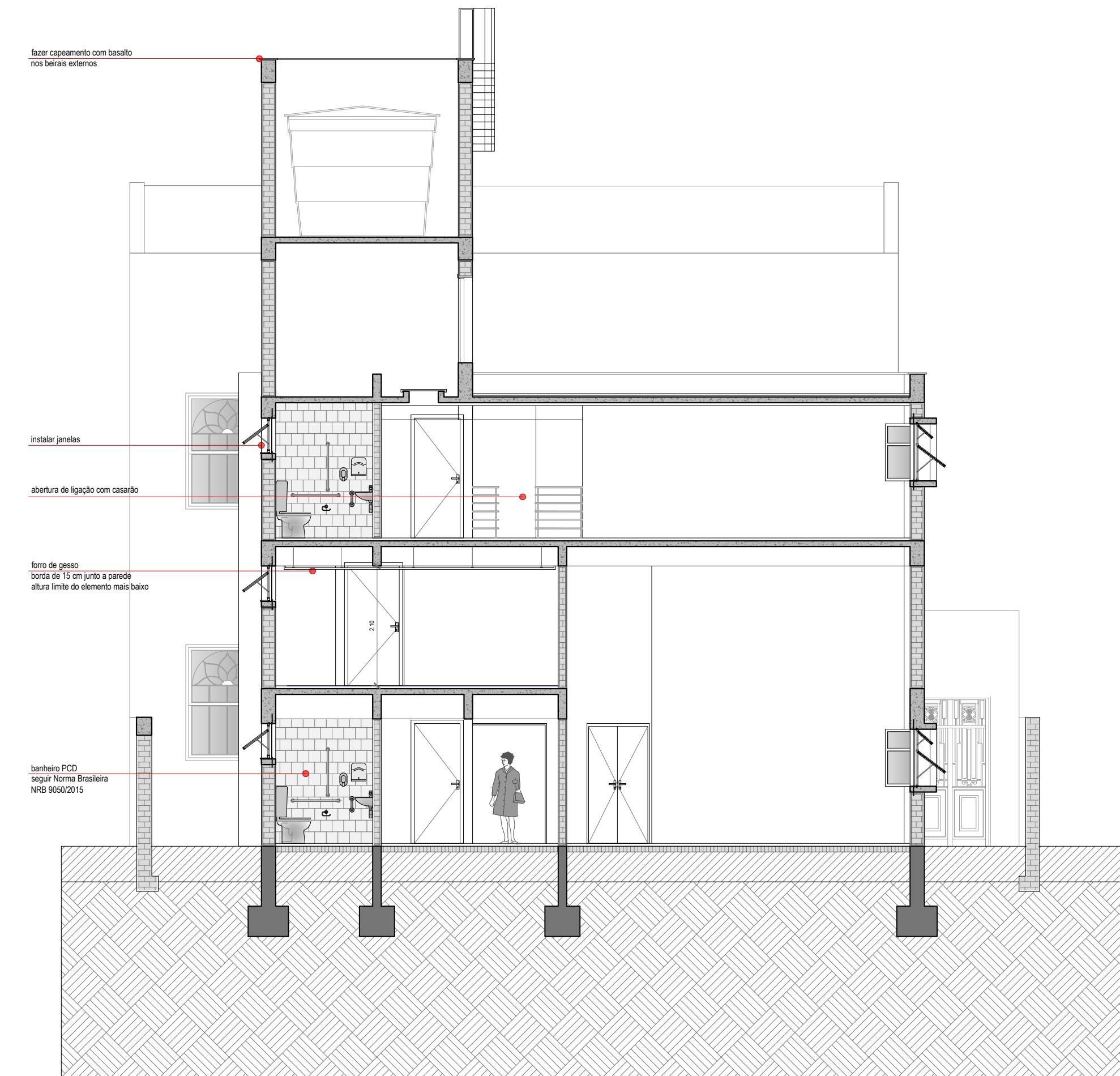


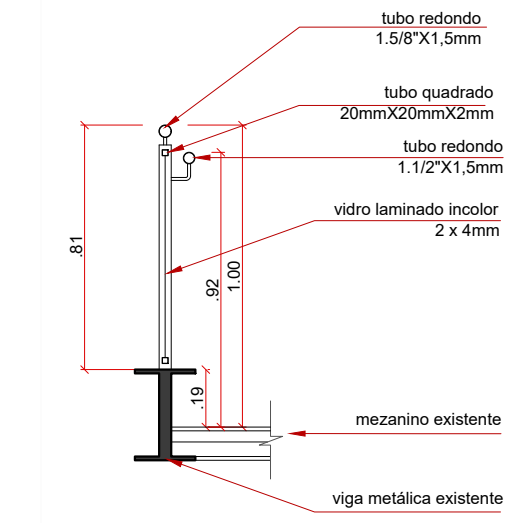
01 corte transversal AA
escala 1/75



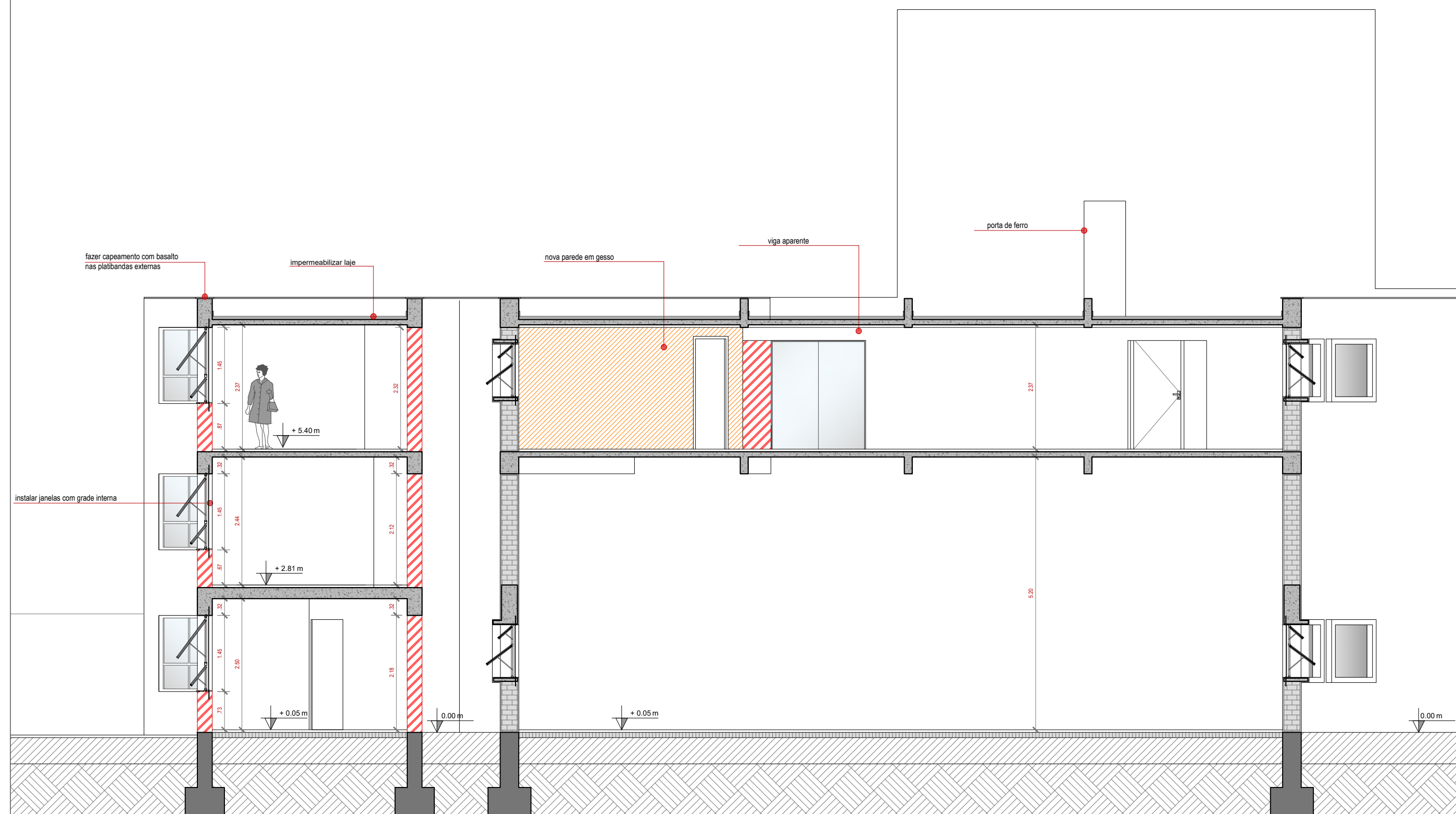
02 corte transversal BB
escala 1/75



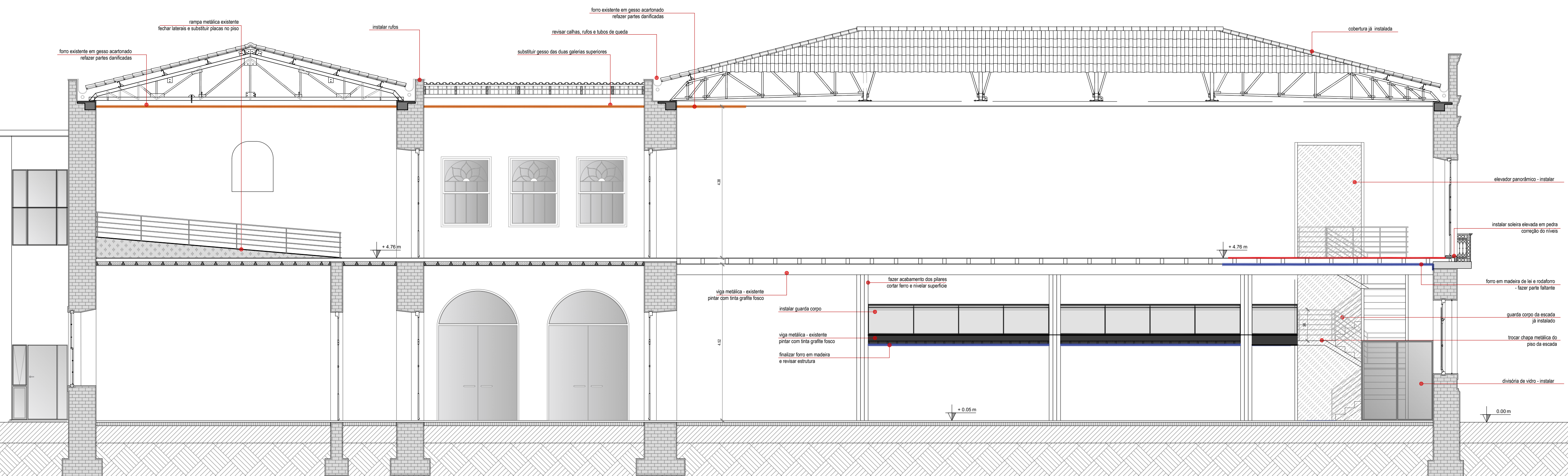
03 corte transversal CC
escala 1/75



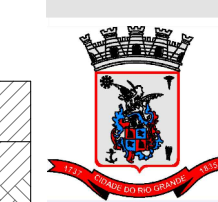
05 detalhe guarda corpo de vidro
escala 1/25



04 corte longitudinal EE
escala 1/75



PREFEITURA MUNICIPAL DO RIO GRANDE
GABINETE DE PROGRAMAS E PROJETOS ESPECIAIS



Remanescente de Obra
SEDE ADMINISTRATIVA SECRETARIA DA EDUCACAO
SOBRADO BARAO DE SAO JOSE DO NORTE
Rua Marechal Floriano e Rua Almirante Barroso

PROJETO ARQUITETONICO
DETALHAMENTO

GPPE
11.2021

HENRIQUE DA COSTA BERNARDELLI
SECRETARIO DE MUNICIPIO DA EDUCACAO

MICHELE SEUS NORMBERG
Engenheiro Civil - CREARIS 19592

BEATRIZ CAUDURO MONTAGNER
Arquiteta e Urbanista - CAU AT47675-6

07/10
ESCALA INDICADA