

01

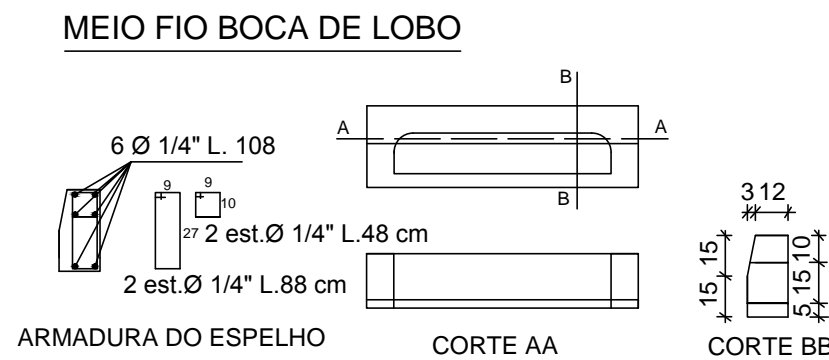
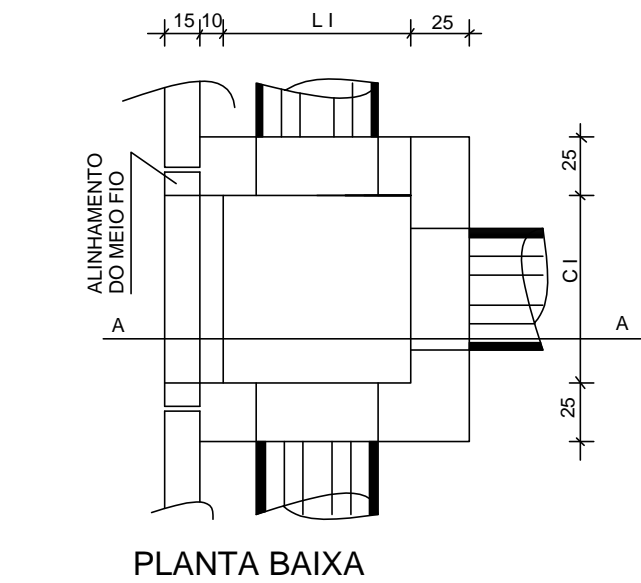
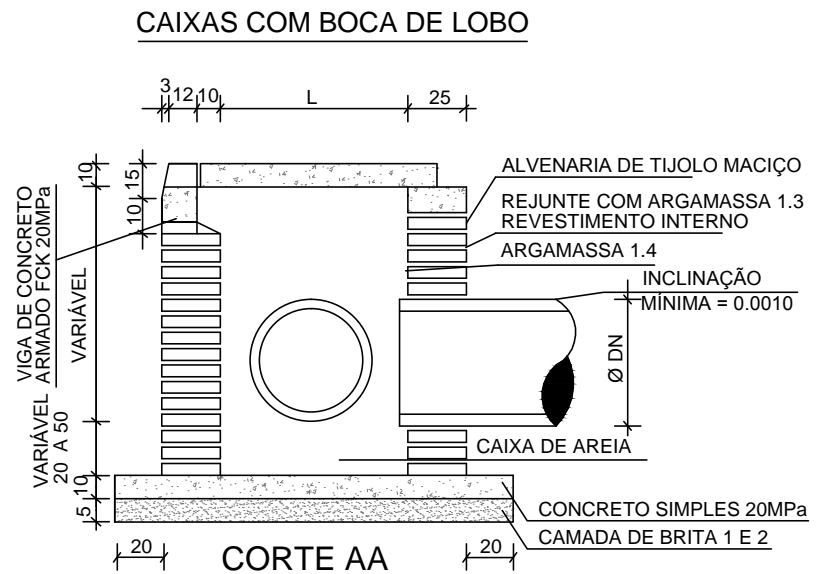
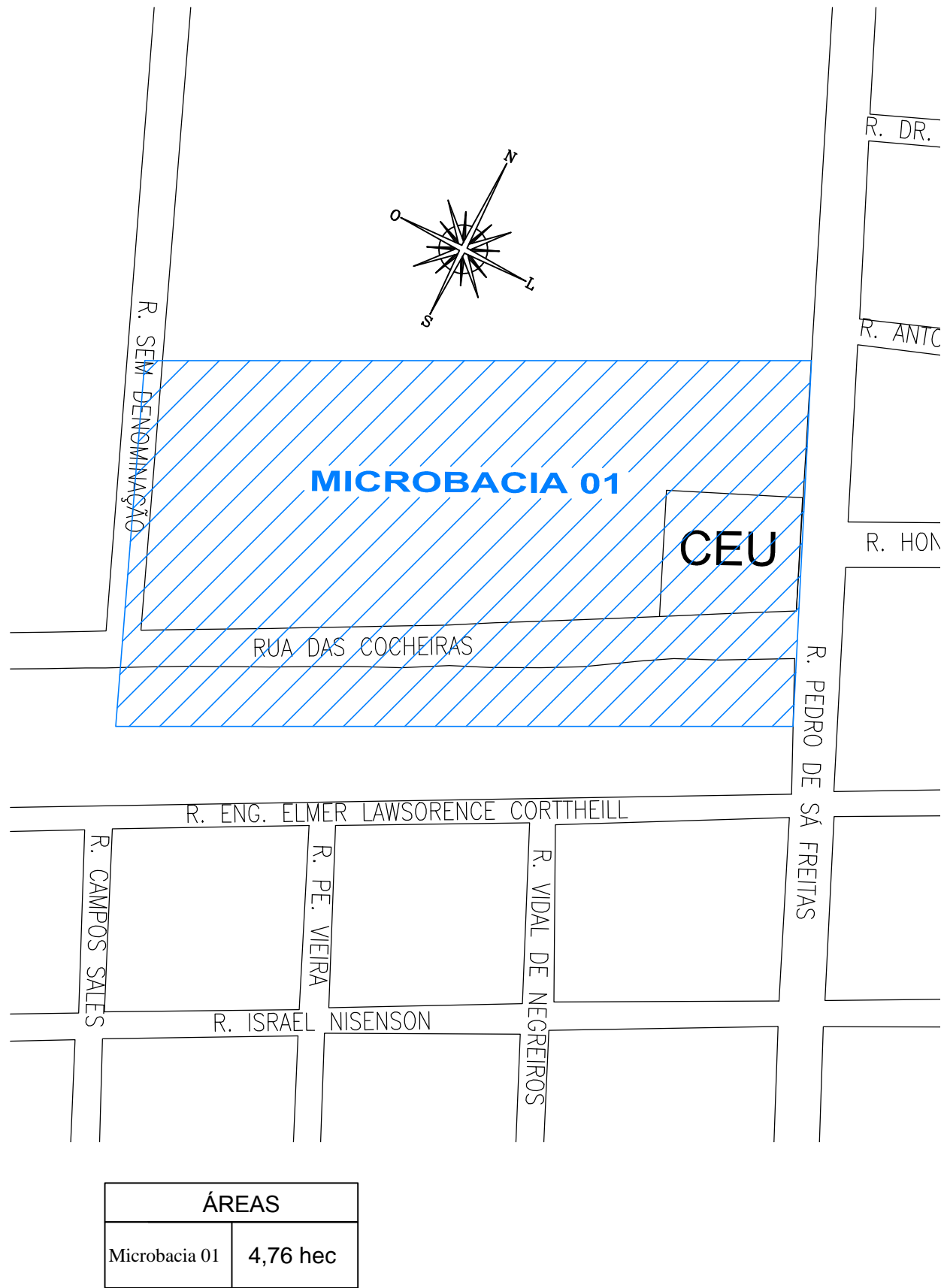
MICROBACIAS

Escala: 1/2500

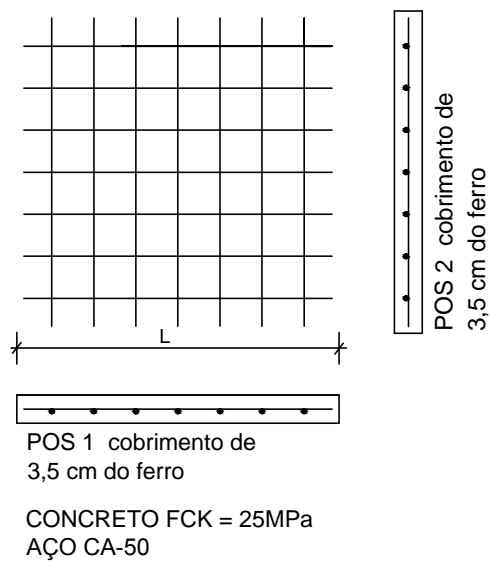
02

DETALHES

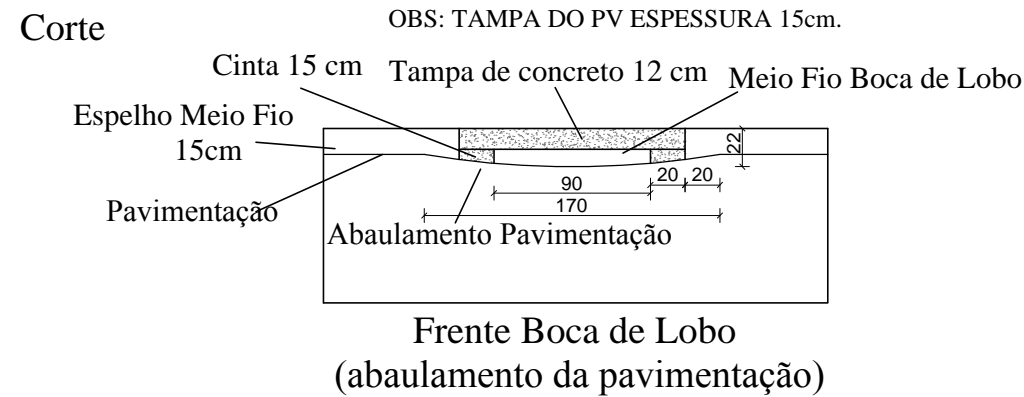
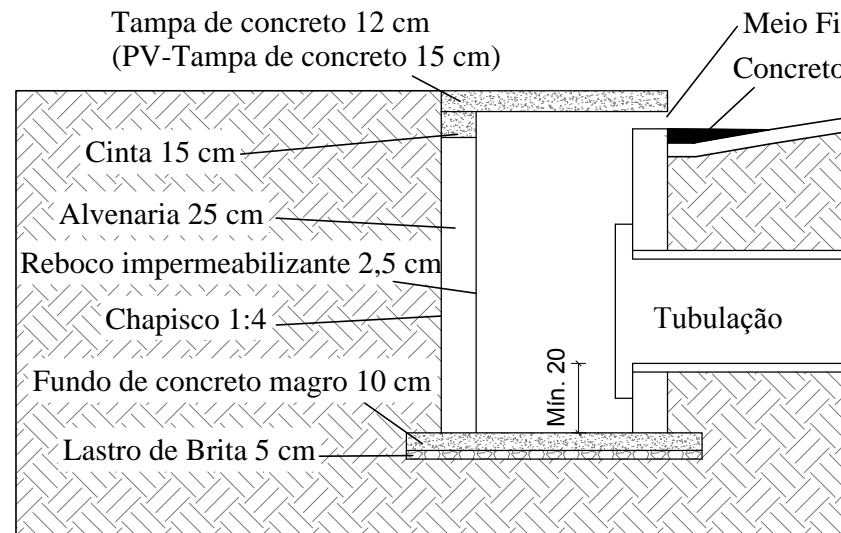
Sem Escala



#### ARMADURA DA TAMPA

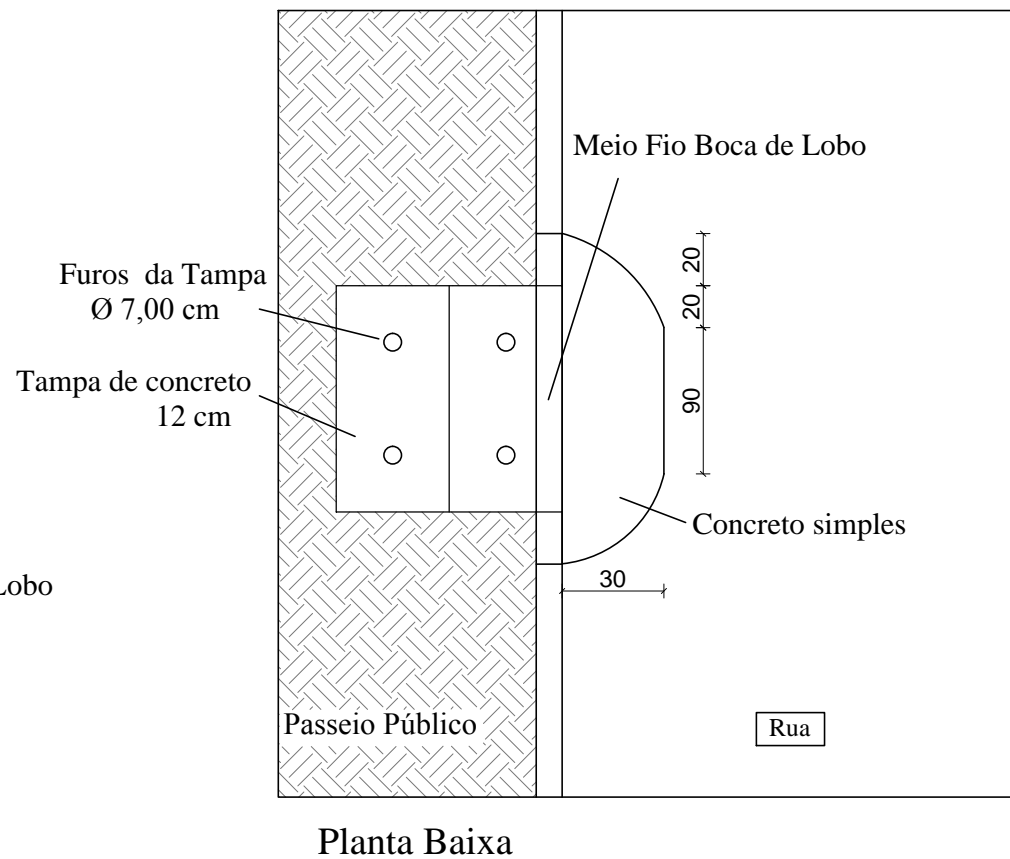


#### DETALHE DAS CAIXAS COM BOCA DE LOBO



#### CAIXAS COM BOCA DE LOBO

TIPO	DN cm	DIMENSÕES TAMPA		DIMENSÕES INTERNAS DA CAIXA		ESPESSURA DA BASE b (m)	DIMENSÕES DO FERRO 1/4"		Nº E ESPAÇAMENTO FERRO 1/4"	
		L (m)	C (m)	L I (m)	C I (m)		POS I	POS II	POS I	POS II
B1	Ø 40	1.05	1.10	0.80	0.80	0.10	1.02	1.07	7C. 15	7C. 15
B2	Ø 60	1.30	1.10	1.00	0.80	0.10	1.27	1.07	8C. 15	7C. 15



PREFEITURA MUNICIPAL DO RIO GRANDE

Gabinete de Programas e Projetos Especiais

Obra/Local:

Projeto de Pavimentação e Drenagem  
Rua das Cocheiras

Especificação:

Microbacias e Detalhes

Equipe de Projeto:

Eng<sup>a</sup> Civil Suzel Magali Leite, CREA-RS: 39323  
Eng<sup>a</sup> Civil Bárbara Lothamer Peixe, CREA-RS: 202828

Coordenação de Projetos:

Eng<sup>a</sup> Civil Suzel Magali Leite, CREA-RS: 39323

Chefe de Gabinete GPPE Darlene Torrada Pereira

Desenho:

Bárbara Peixe

Data:

Janeiro/2019

Escala:

Indicada

Prancha:

05/05