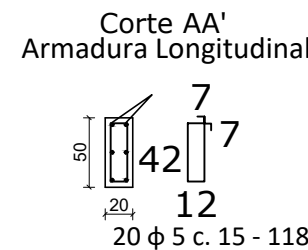
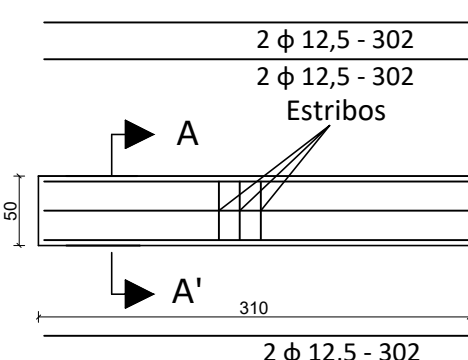
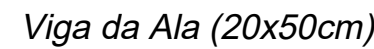
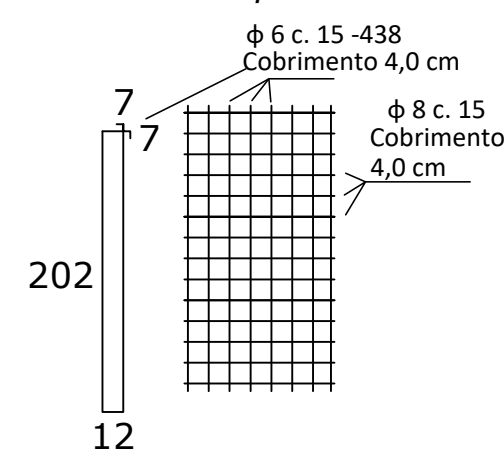
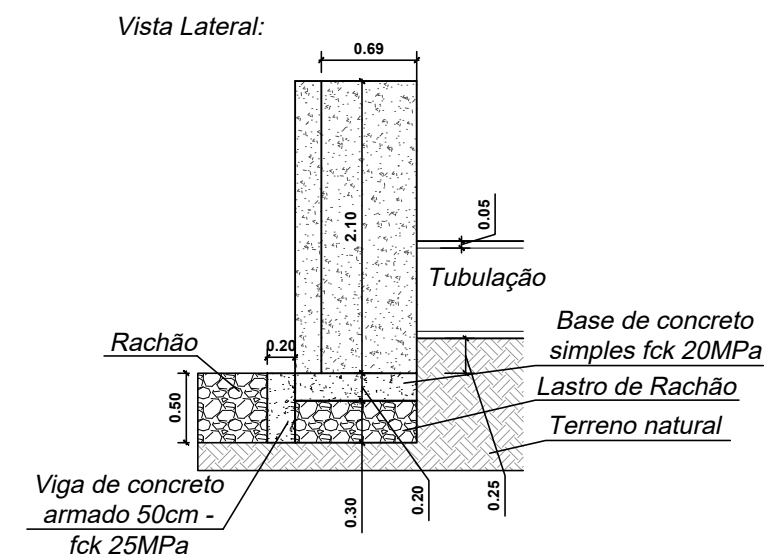
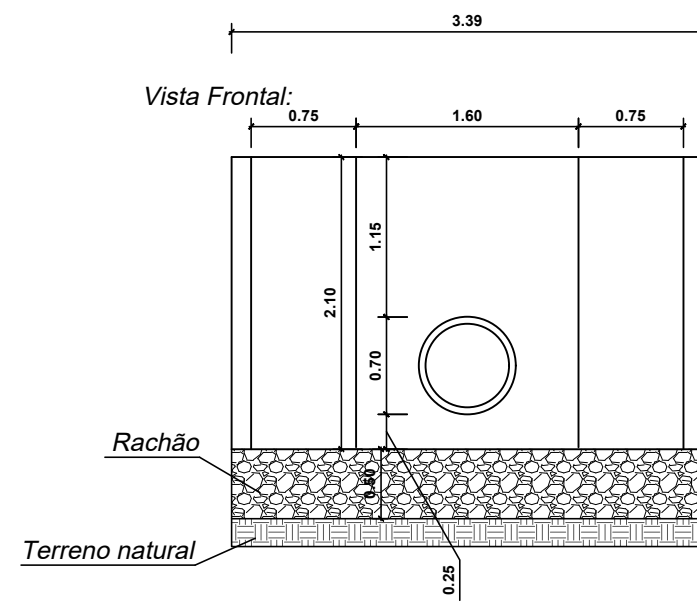
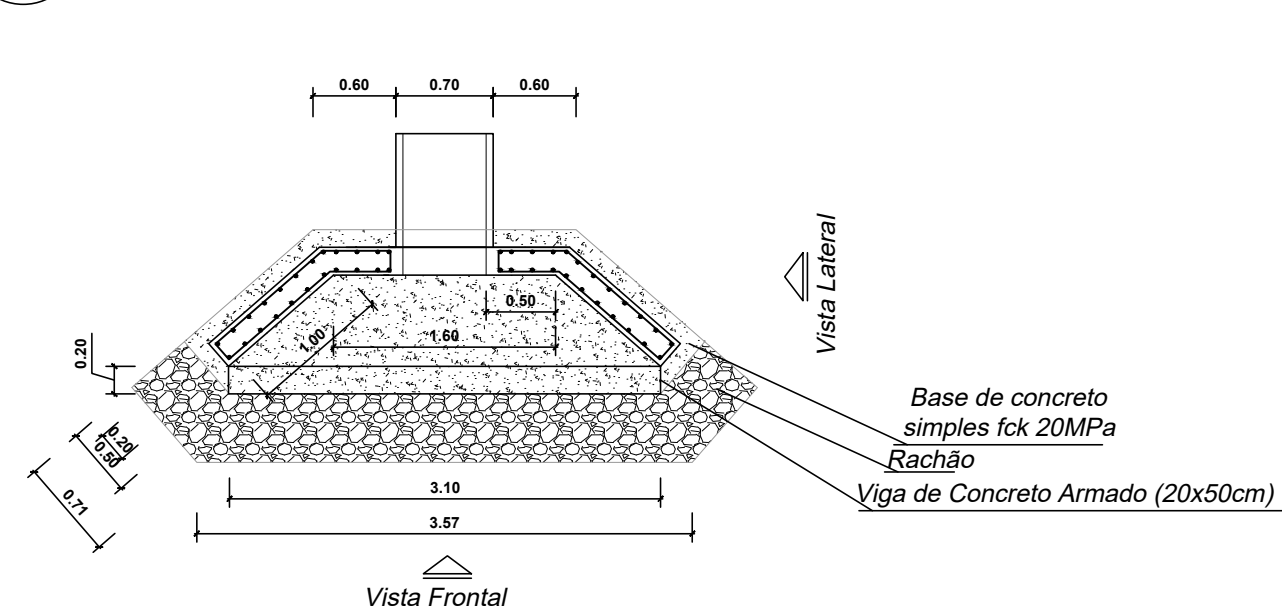


## DETALHAMENTO DA ALA DE CONCRETO

## SEM ESCALA

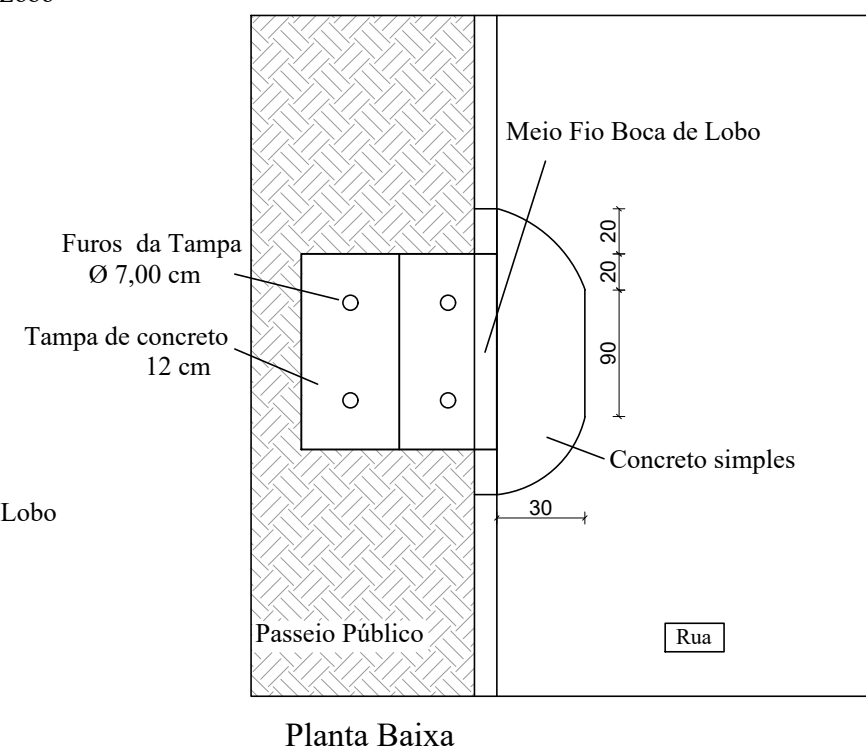
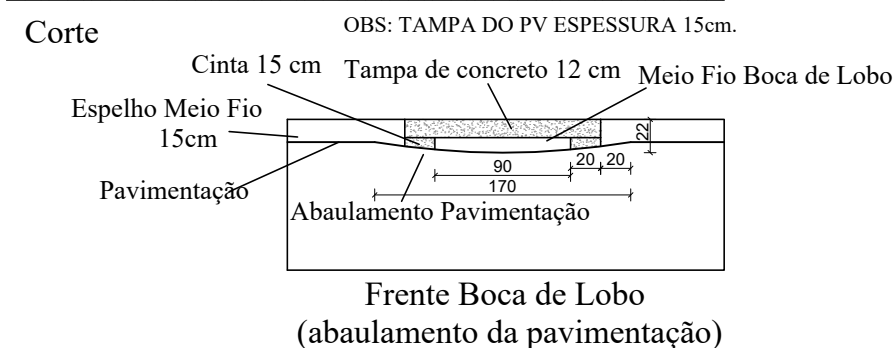
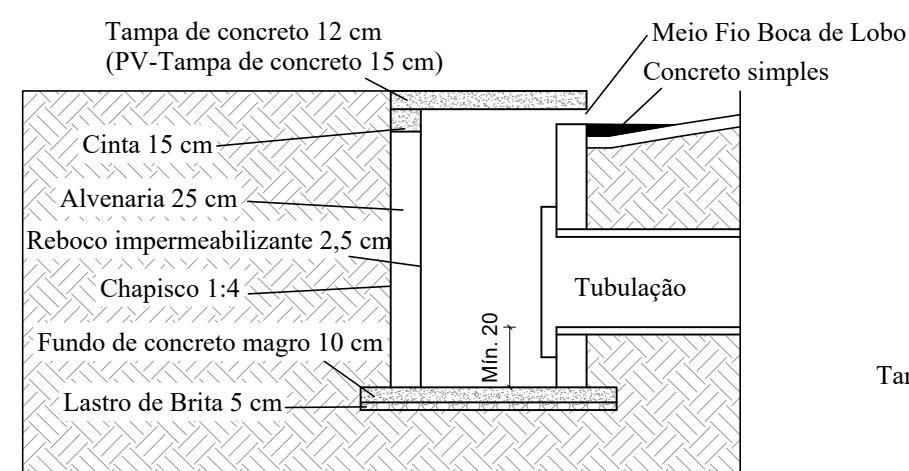
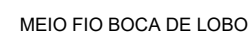
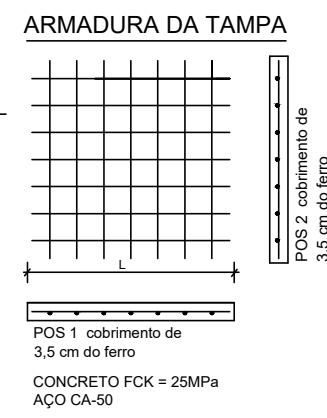
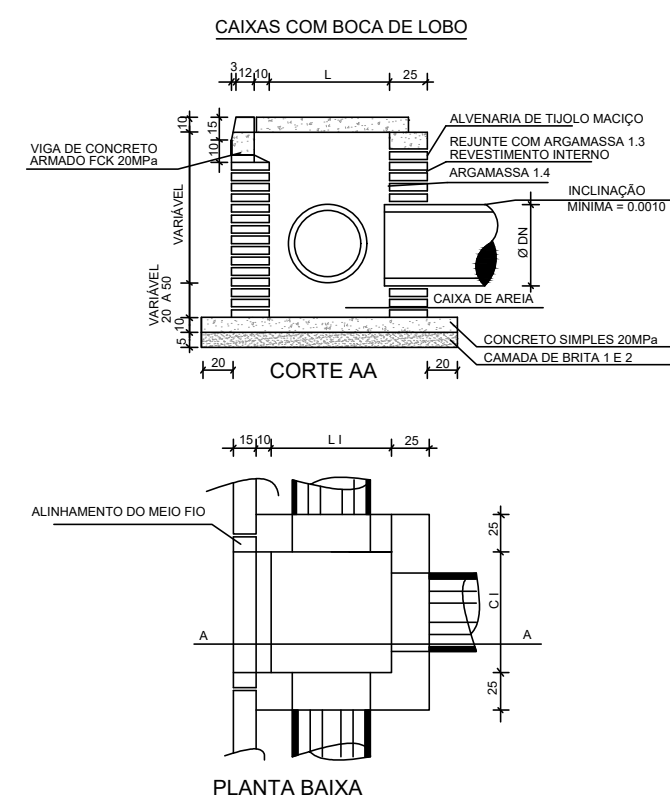


# CAIXAS COM BOCA DE LOBO

TIPO	DN cm	DIMENSÕES TAMPA		DIMENSÕES INTERNAS DA CAIXA		ESPESSURA DA BASE	DIMENSÕES DO FERRO 1/4"		Nº E ESPAÇAMENTO FERRO 1/4"	
		L (m)	C (m)	L I (m)	C I (m)	b (m)	POS I	POS II	POS I	POS II
BL1 / PV1	Ø 40	1.20	1.20	0.80	0.80	0.10	1.07	1.07	7C. 15	7C. 15
BL2 / PV2	Ø 60	1.20	1.40	0.80	1.00	0.10	1.07	1.27	7C. 15	8C. 15
BL3 / PV3	2 Ø 60	1.20	2.50	0.80	2.10	0.10	1.07	2.37	7C. 15	16C. 15
BL4 / PV4	2 Ø 60	2.50	2.50	2.10	2.10	0.10	2.37	2.37	16C. 15	16C. 15

## DETALHAMENTO BL's E PV's

## SEM ESCALA



<p align="center"><b>PREFEITURA MUNICIPAL DO RIO GRANDE</b>  <b>Gabinete de Programas e Projetos Especiais - GPPE</b></p>			
Obra/Local:		<p align="center">Projeto de Pavimentação e Drenagem  Rua Haiti entre (Av. José Bonifacio e Rua Bolivia)</p>	
Especificação:		<p align="center">Detalhamentos</p>	
Equipe de Projeto:		<p align="center">Eng<sup>a</sup> Civil Bruna Teixeira Porciúncula Altê, CREA-RS: 202849</p>	
<p align="center">Coordenação de Projetos: Eng<sup>a</sup> Civil Suzel Magali Leite, CREA-RS: 39323</p>			
<p align="center">Chefe de Gabinete GPPE: Andrea dos Santos</p>			
Desenho:	Data:	Escala:	Prancha:
Bruna Altê	Maio/2020	Indicada	04/04