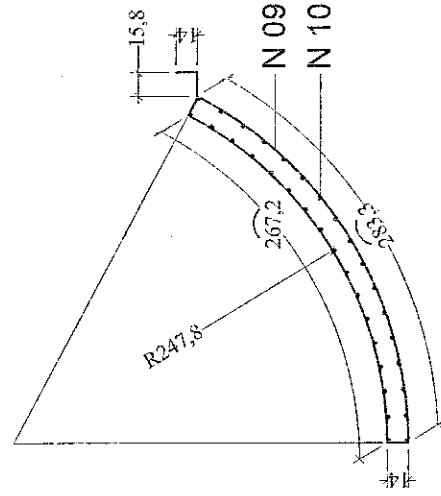
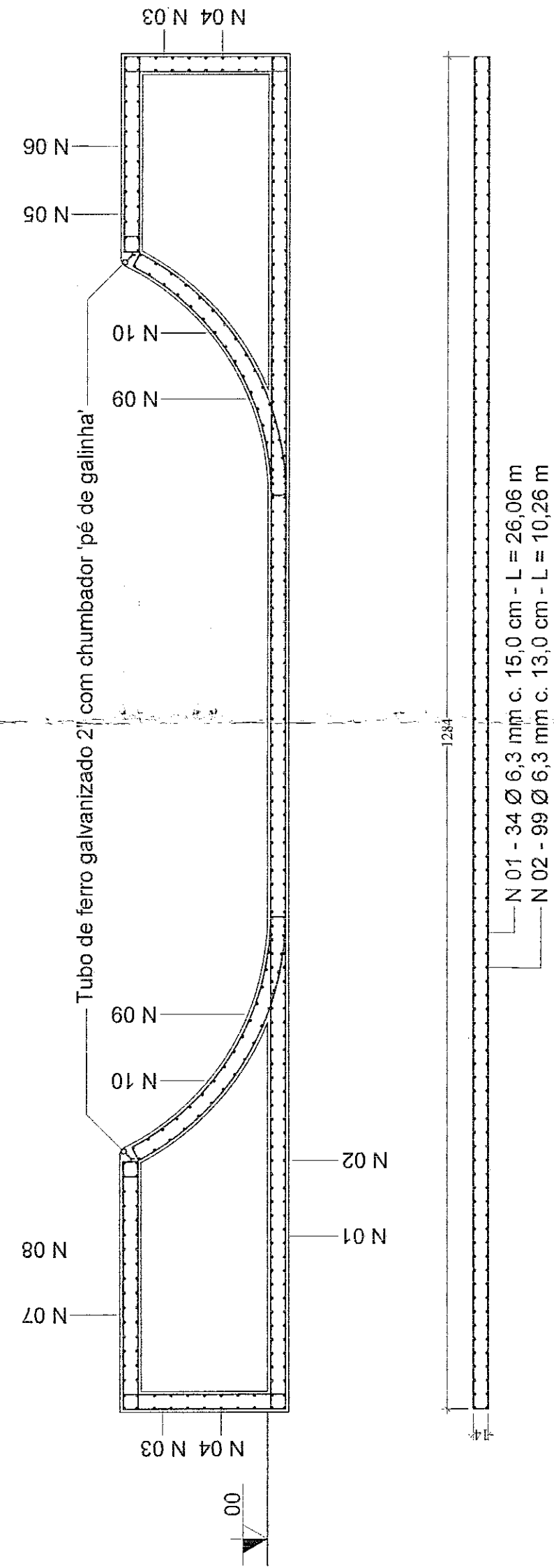


N 09 - 17 Ø 6,3 mm c. 15,0 cm - L = 5,26 m
N 10 - 17 Ø 6,3 mm c. 17,5 cm - L = 6,08 m



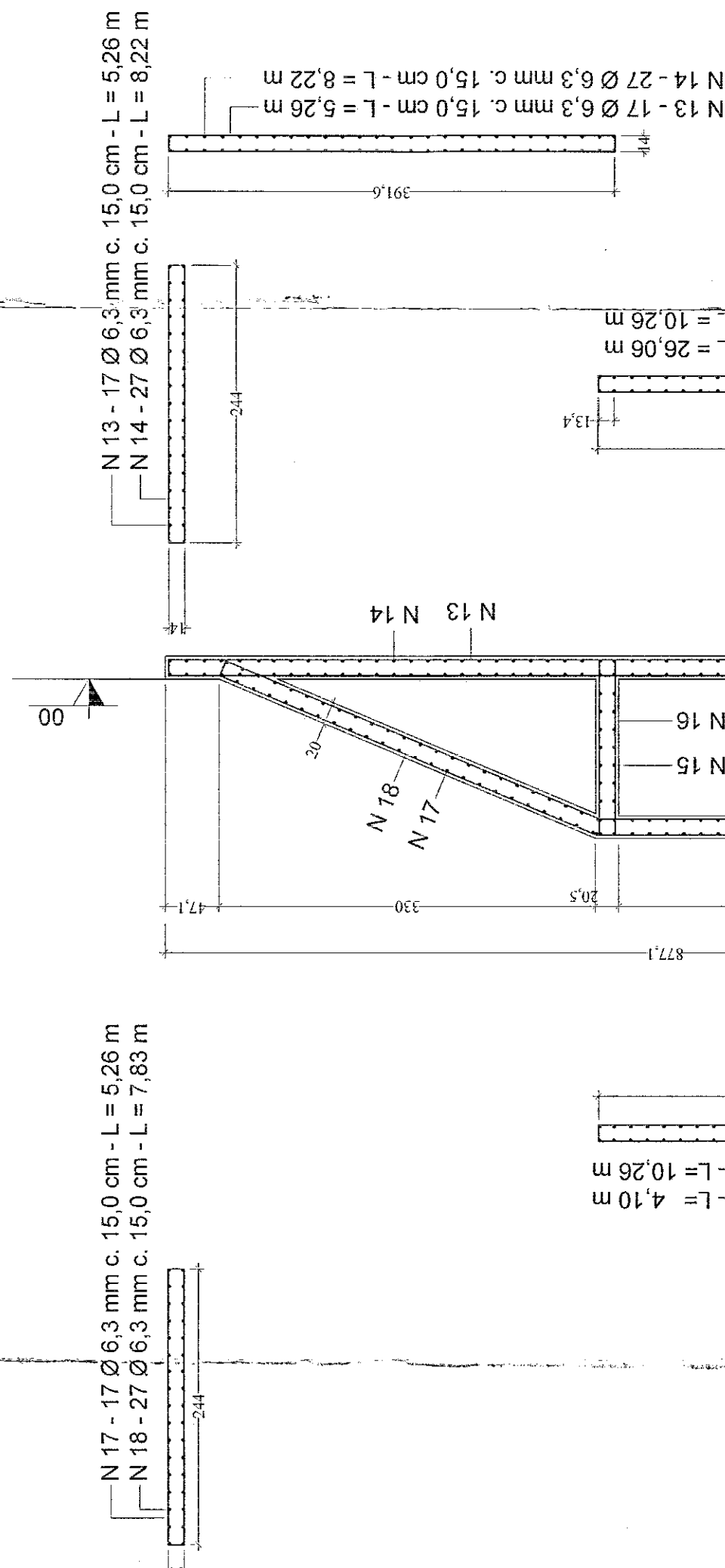
N 09 - 17 Ø 6,3 mm c. 15,0 cm - L = 5,26 m
N 10 - 17 Ø 6,3 mm c. 17,5 cm - L = 6,08 m

N 07 - 35 Ø 6,3 mm c. 15,0 cm - L = 5,10 m
N 08 - 18 Ø 6,3 mm c. 14,0 cm - L = 10,26 m
N 07 - 35 Ø 6,3 mm c. 15,0 cm - L = 5,10 m
N 08 - 14 Ø 6,3 mm c. 14,0 cm - L = 10,26 m

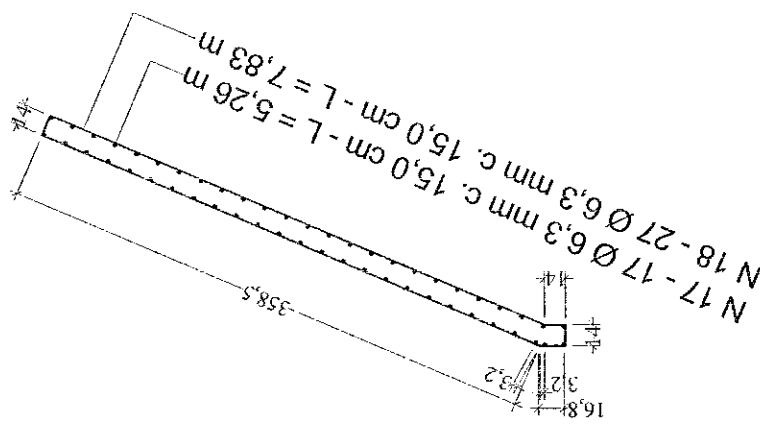


N 01 - 34 Ø 6,3 mm c. 15,0 cm - L = 25,06 m
N 02 - 99 Ø 6,3 mm c. 13,0 cm - L = 10,26 m

CORTE AA' - Detalhe do Half
Esc.: 1:50



N 17 - 17 Ø 6,3 mm c. 15,0 cm - L = 5,26 m
N 18 - 27 Ø 6,3 mm c. 15,0 cm - L = 7,83 m



N 15 - 11 Ø 6,3 mm c. 15,0 cm - L = 5,26 m
N 16 - 27 Ø 6,3 mm c. 15,0 cm - L = 3,46 m

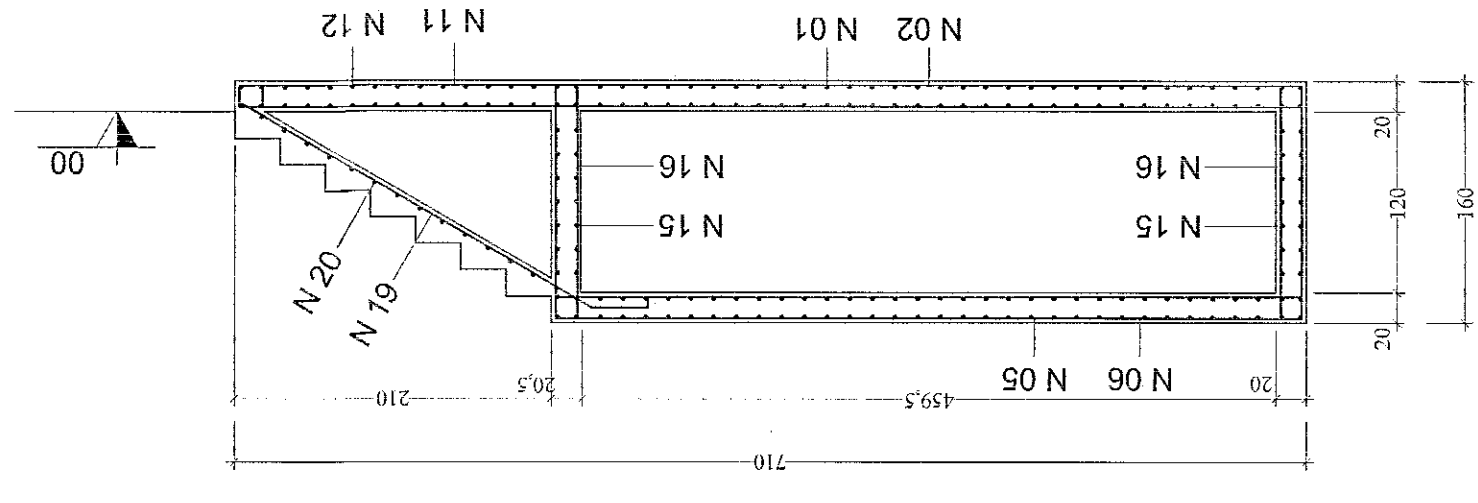
N 15 - 11 Ø 6,3 mm c. 15,0 cm - L = 5,26 m
N 16 - 17 Ø 6,3 mm c. 15,0 cm - L = 3,46 m

N 07 - 35 Ø 6,3 mm c. 15,0 cm - L = 4,10 m
N 08 - 14 Ø 6,3 mm c. 14,0 cm - L = 10,26 m

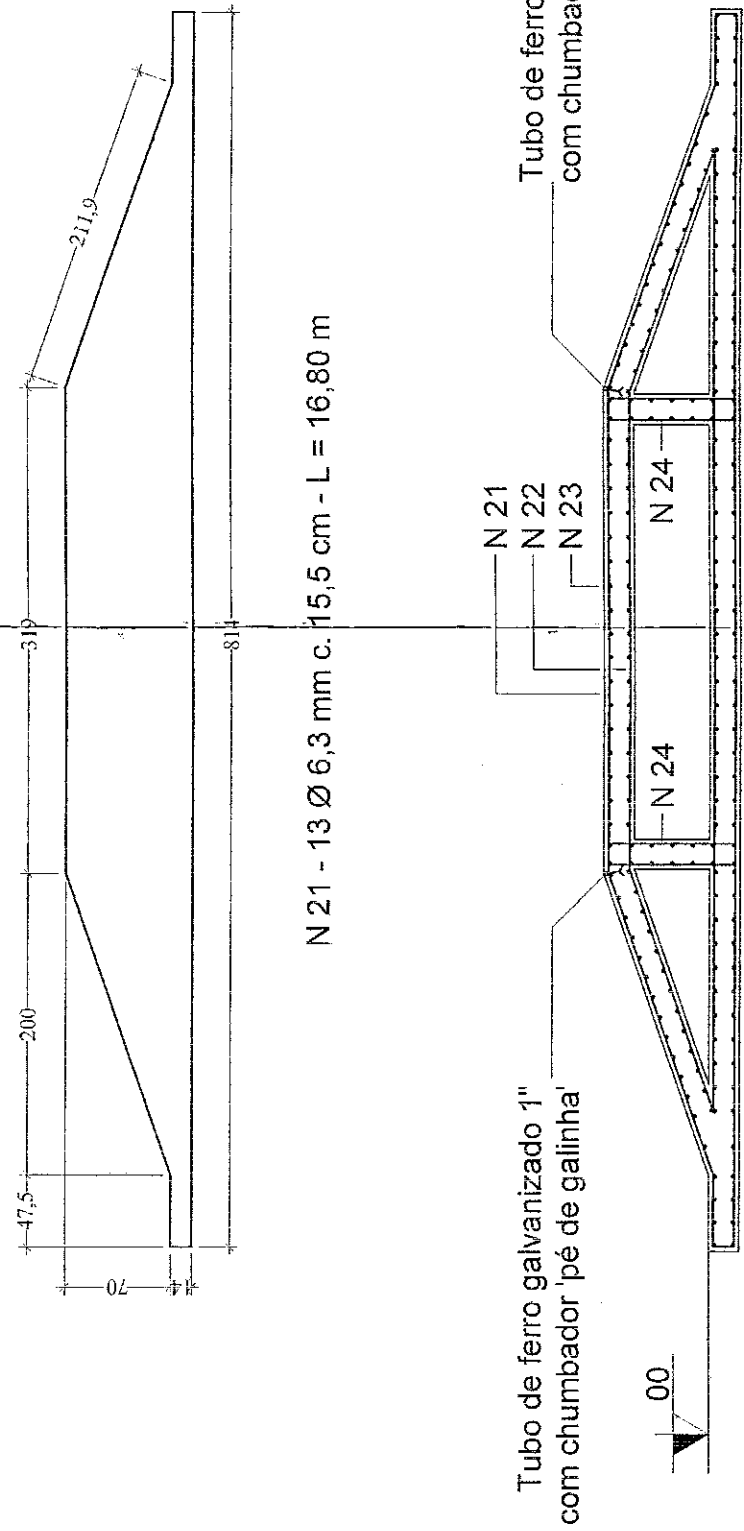
N 01 - 34 Ø 6,3 mm c. 15,0 cm - L = 25,06 m
N 02 - 99 Ø 6,3 mm c. 13,0 cm - L = 10,26 m

N 13 - 17 Ø 6,3 mm c. 15,0 cm - L = 5,26 m
N 14 - 27 Ø 6,3 mm c. 15,0 cm - L = 8,22 m

N 19 - 13 Ø 6,3 mm c. 15,0 cm - L = 1,94 m
N 20 - 15 Ø 6,3 mm c. 17,0 cm - L = 3,55 m
N 05 - 35 Ø 6,3 mm c. 15,0 cm - L = 4,10 m
N 06 - 14 Ø 6,3 mm c. 14,0 cm - L = 10,26 m

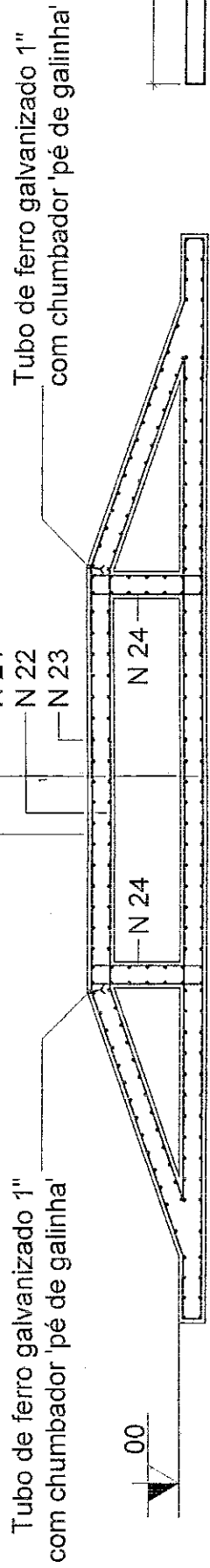


Corte BB' - Detalhe da Plataforma do Corrimão
Esc.: 1:50



N 21 - 13 Ø 6,3 mm c. 15,5 cm - L = 16,80 m

N 03 - 35 Ø 6,3 mm c. 15,0 cm - L = 3,46 m
N 04 - 11 Ø 6,3 mm c. 16,0 cm - L = 10,26 m

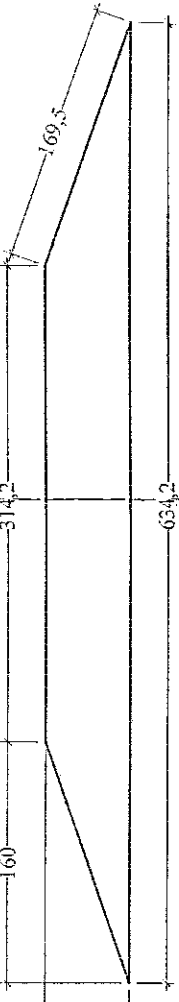


N 23 - 95 Ø 6,3 mm
c. 15,0 cm - L = 4,16 m

N 24 - 13 Ø 6,3 mm
c. 15,5 cm - L = 1,96 m


N 24 - 13 Ø 6,3 mm
c. 15,5 cm - L = 1,96 m

N 22 - 13 Ø 6,3 mm c. 15,5 cm - L = 12,90 m

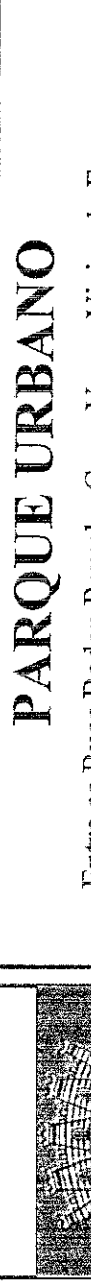


CONCRETO		
fk _{ck} = 25 MPa		
Fator α / ε = 0,46		
Cobrimento: 3,0 cm		
Volume de concreto = 42,85 m³		

RELAÇÃO DO AÇO (CA - S0)		
Bitola	Quant. (m)	Quant. (bares)
Ø 6,3 mm	6.560,00	530



Secretaria Municipal de Coordenação e Planejamento




PARQUE URBANO

Entre as Ruas Baden Powell e Com. Vasco Vieira da Fonseca

PROJETO ESTRUTURAL

Planta de Armadura da Pista de Skate



UPU

Nilceu Vargas Furtado - Engenheiro Civil - CREA RS 134.486 - D

Responsible Técnico pelo Projeto

Desenho Nilceu

Escala 1:50

Data AGO / 2008

Prancha

EST 02

Corte CC' - Detalhe da Plataforma da Escada
Esc.: 1:50